

Respiratory Virus Summary (2021-2022 Season)

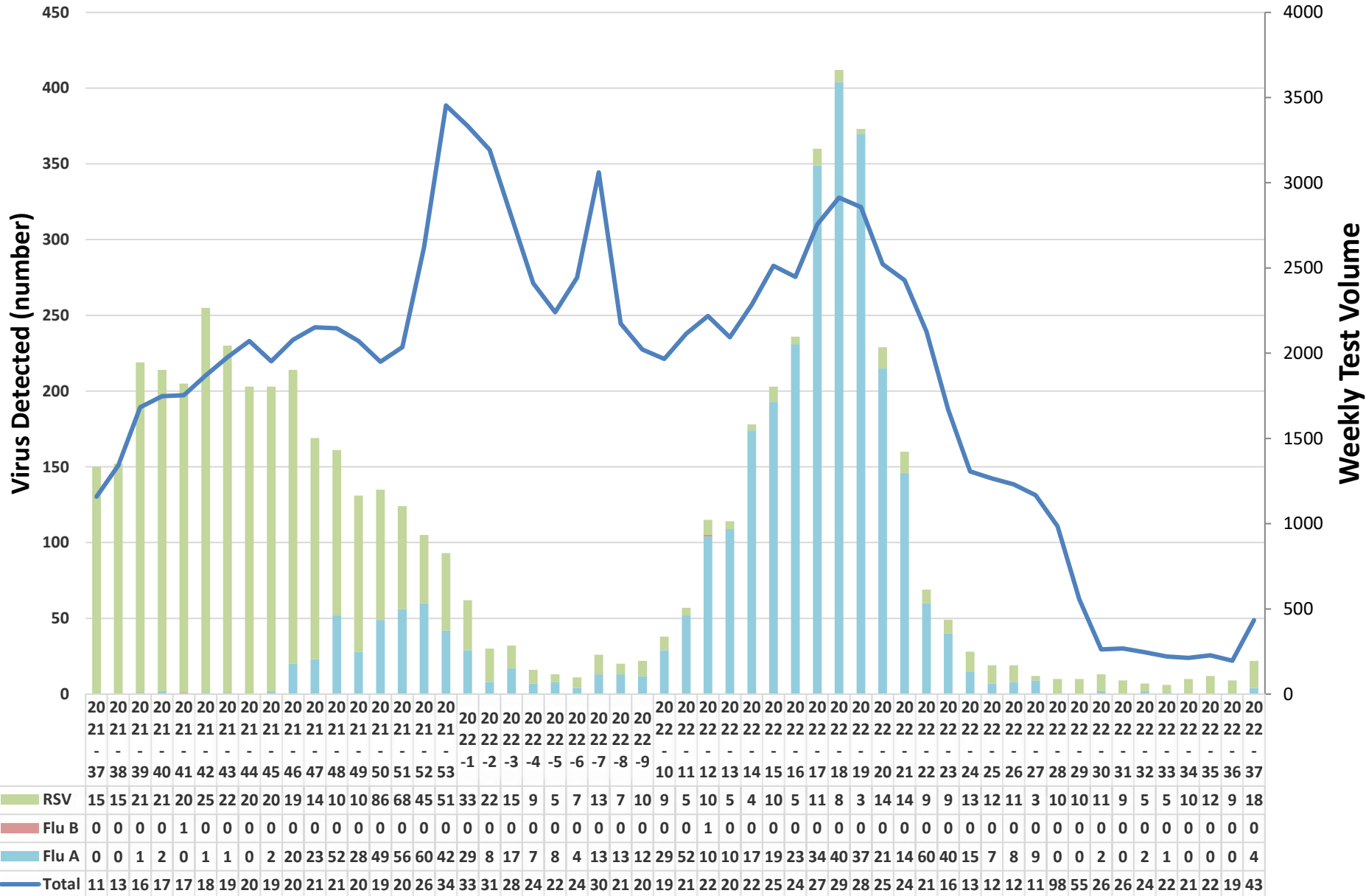
Week: 2022-37

Ending September 17, 2022

Beaumont

Rapid Influenza & RSV by PCR

Beaumont

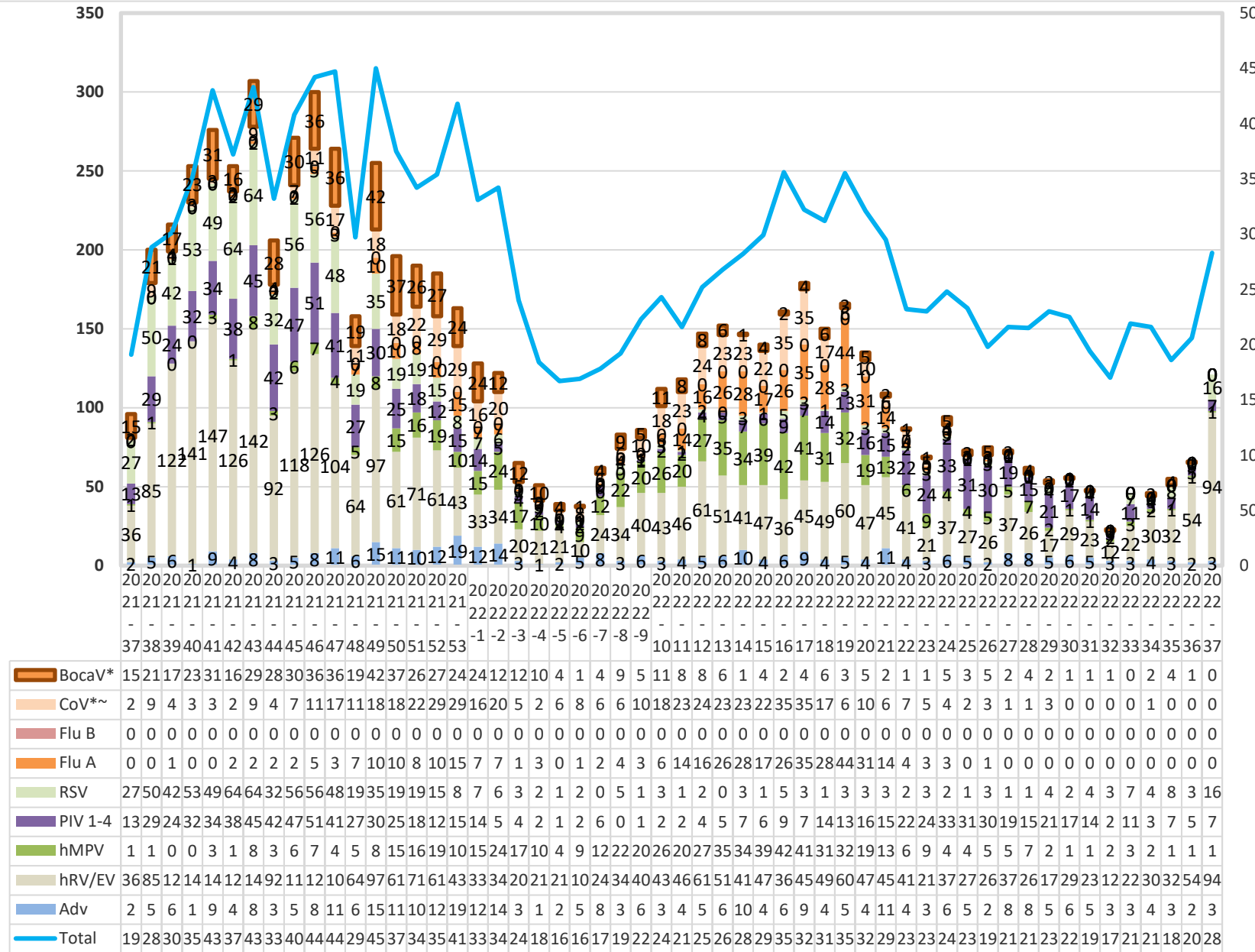


Respiratory Virus Panel by PCR

Beaumont

Virus Detected (number)

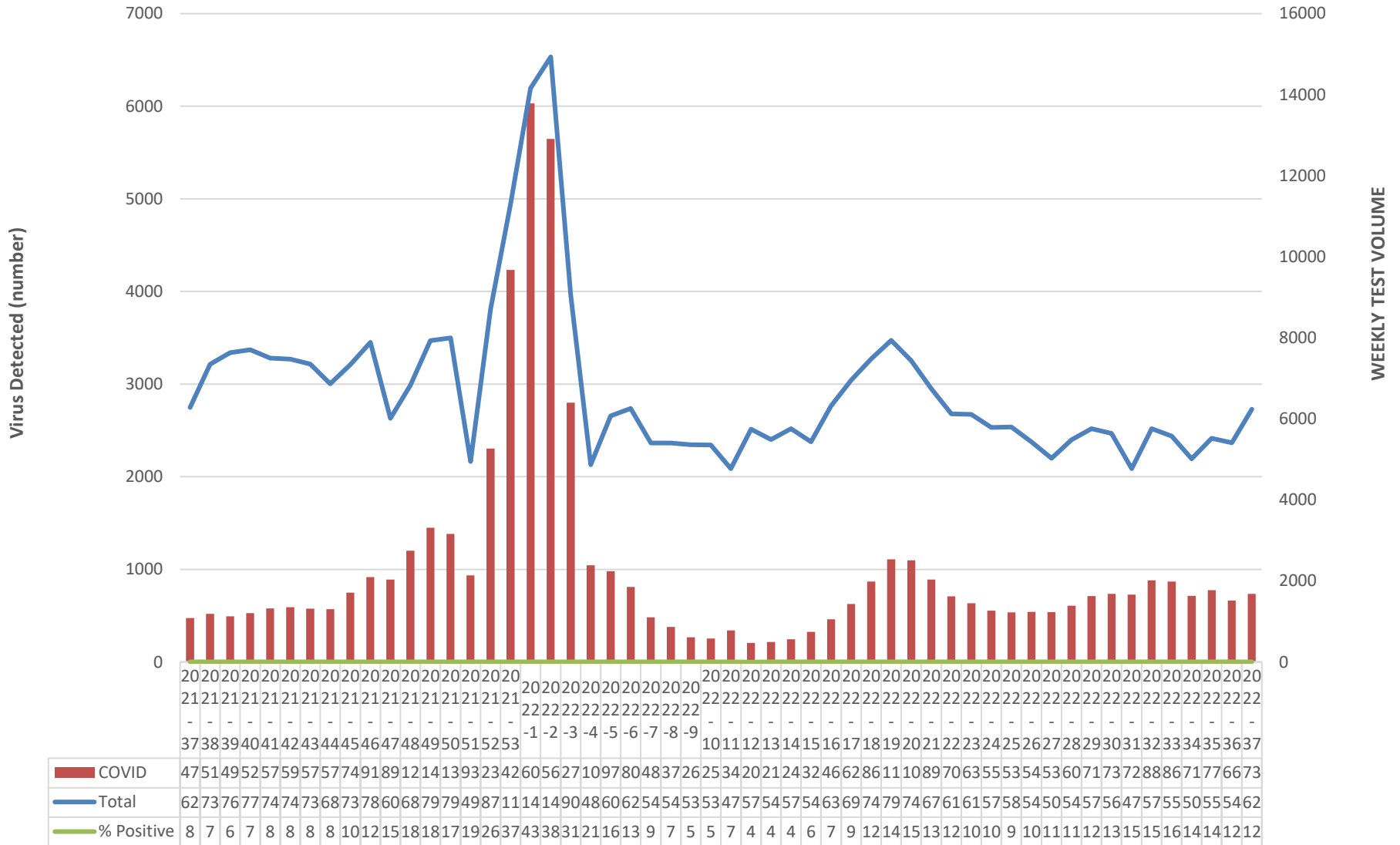
WEEKLY TEST VOLUME



*~SARS-CoV-2 data from the RVP is reported on slide 7, CoV data reported above is only seasonal coronaviruses

Beaumont Laboratory COVID-19 Testing

Beaumont



*Beaumont Laboratory data includes retests that may represent persistent infections. For primary infections only, please refer to the MDHHS website https://www.michigan.gov/coronavirus/0,9753,7-406-98163_98173---,00.html

Beaumont Laboratory Influenza and RSV Testing

Beaumont

