

# Respiratory Virus Summary (2021-2022 Season)

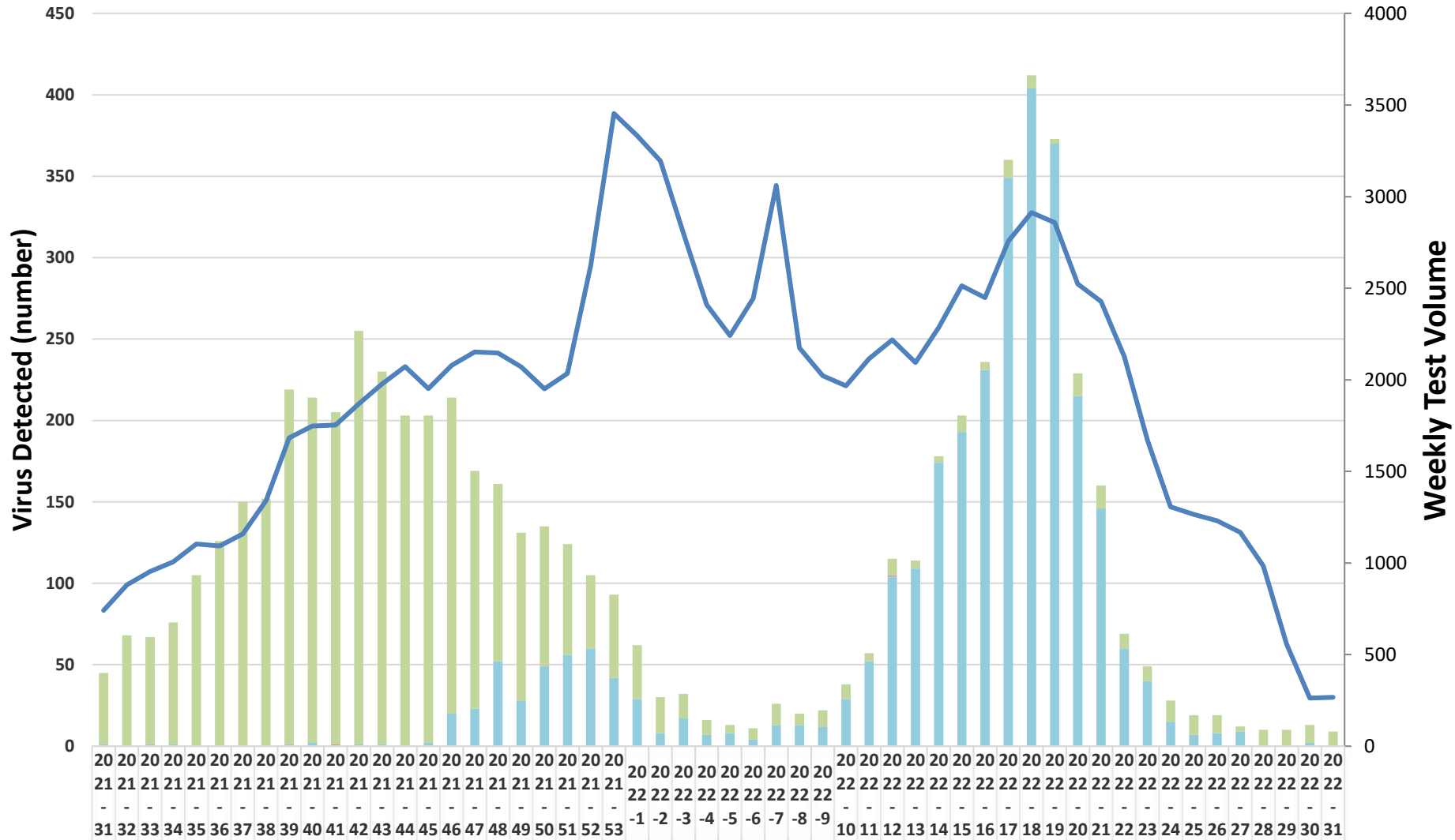
*Week: 2022-31*

*Ending August 6, 2022*

**Beaumont**

# Rapid Influenza & RSV by PCR

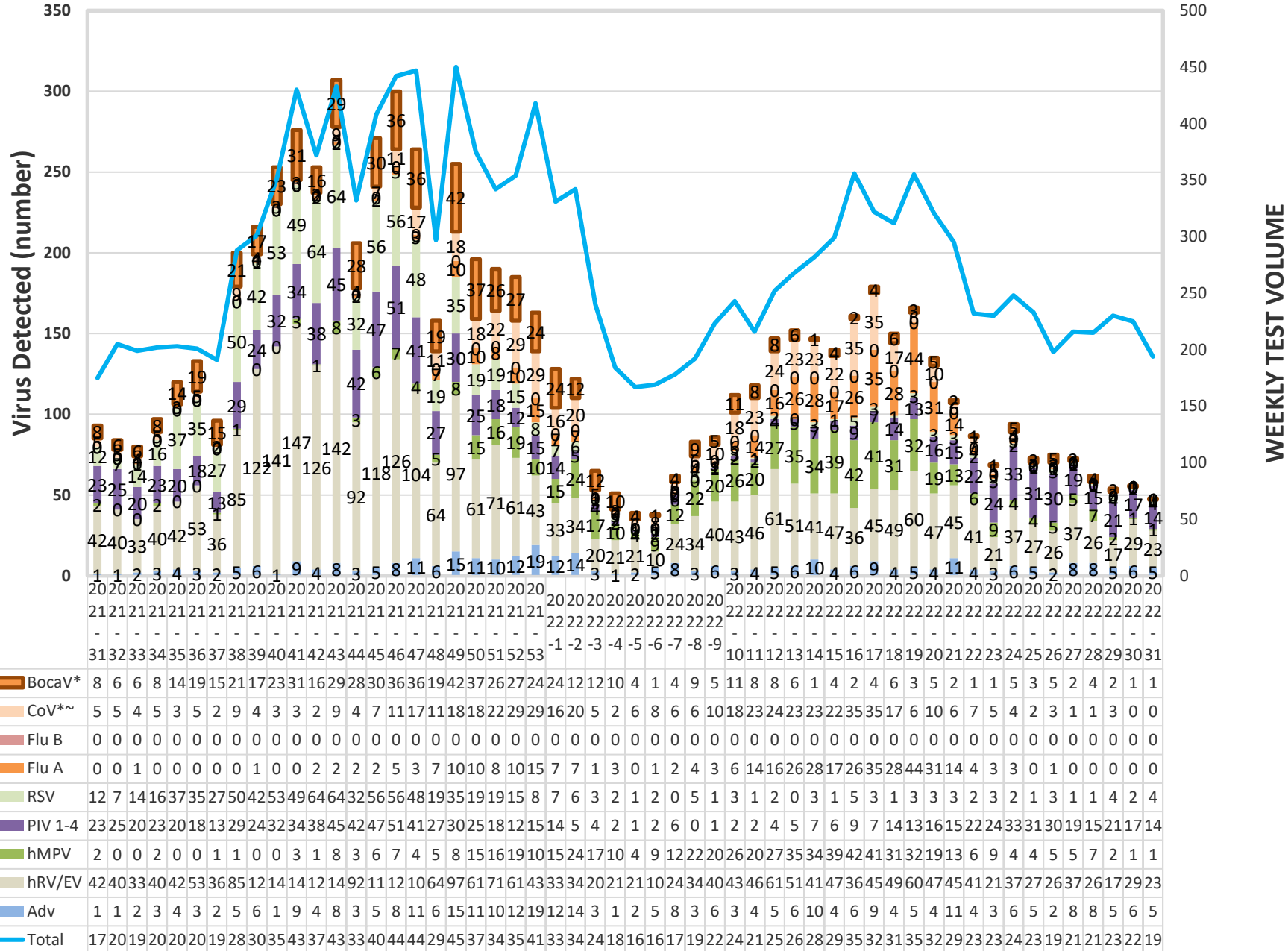
**Beaumont**



	2021-31	2021-32	2021-33	2021-34	2021-35	2021-36	2021-37	2021-38	2021-39	2021-40	2021-41	2021-42	2021-43	2021-44	2021-45	2021-46	2021-47	2021-48	2021-49	2021-50	2021-51	2021-52	2021-53	2022-1	2022-2	2022-3	2022-4	2022-5	2022-6	2022-7	2022-8	2022-9	2022-10	2022-11	2022-12	2022-13	2022-14	2022-15	2022-16	2022-17	2022-18	2022-19	2022-20	2022-21	2022-22	2022-23	2022-24	2022-25	2022-26	2022-27	2022-28	2022-29	2022-30	2022-31		
RSV	44	68	66	75	10	12	15	15	21	21	20	25	22	20	20	19	14	10	10	86	68	45	51	33	22	15	9	5	7	13	7	10	9	5	10	5	4	10	5	11	8	3	14	14	9	9	13	12	11	3	10	10	11	9		
Flu B	0	0	0	0	0	0	0	0	0	1	0	0	0	0	0	0	0	0	0	0	0	0	0	0	0	0	0	0	0	0	0	0	0	0	0	1	0	0	0	0	0	0	0	0	0	0	0	0	0	0	0	0	0	0	0	0
Flu A	1	0	1	1	0	0	0	1	2	0	1	1	0	2	20	23	52	28	49	56	60	42	29	8	17	7	8	4	13	13	12	29	52	10	10	17	19	23	34	40	37	21	14	60	40	15	7	8	9	0	0	2	0			
Total	74	88	95	10	11	10	11	13	16	17	17	18	19	20	19	20	21	21	20	19	20	26	34	33	31	28	24	22	24	30	21	20	19	21	22	20	22	25	24	27	29	28	25	24	21	16	13	12	12	11	98	55	26	26		

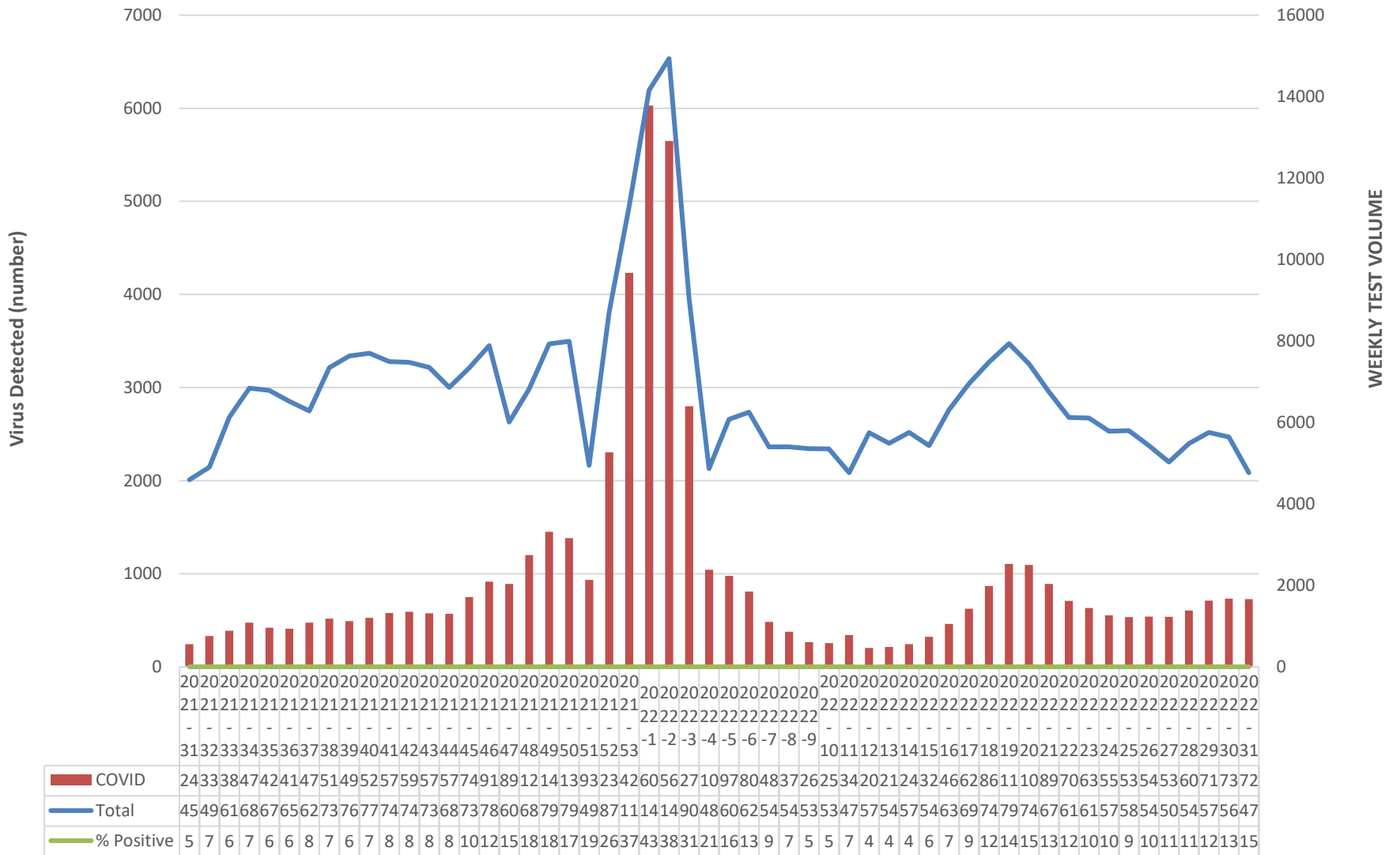
# Respiratory Virus Panel by PCR

**Beaumont**



# Beaumont Laboratory COVID-19 Testing

**Beaumont**



\*Beaumont Laboratory data includes retests that may represent persistent infections. For primary infections only, please refer to the MDHHS website [https://www.michigan.gov/coronavirus/0,9753,7-406-98163\\_98173---,00.html](https://www.michigan.gov/coronavirus/0,9753,7-406-98163_98173---,00.html)

# Beaumont Laboratory Influenza and RSV Testing

**Beaumont**



