

# Respiratory Virus Summary (2021-2022 Season)

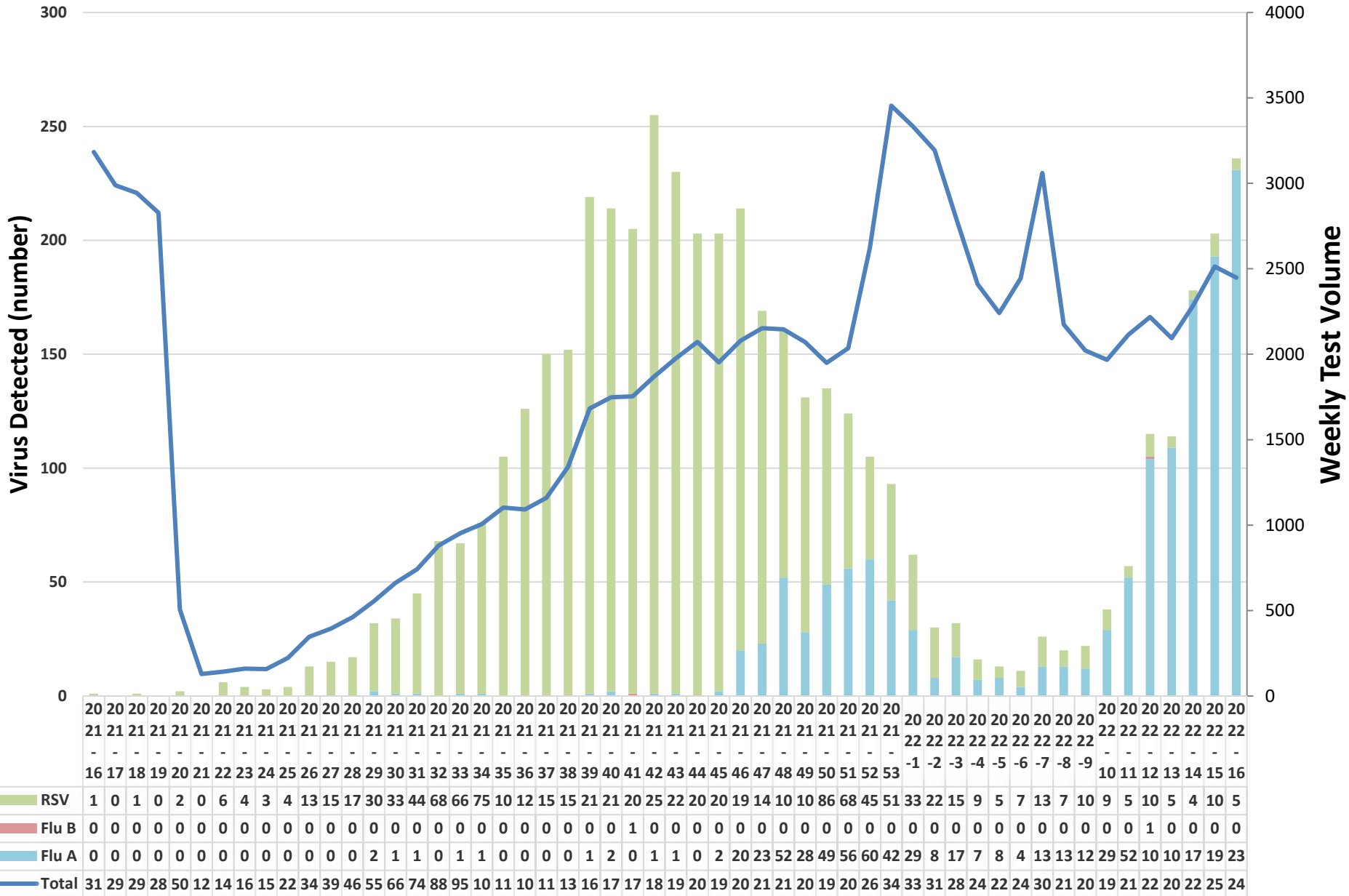
*Week: 2022-16*

*Ending April 23, 2022*

**Beaumont**

# Rapid Influenza & RSV by PCR

**Beaumont**

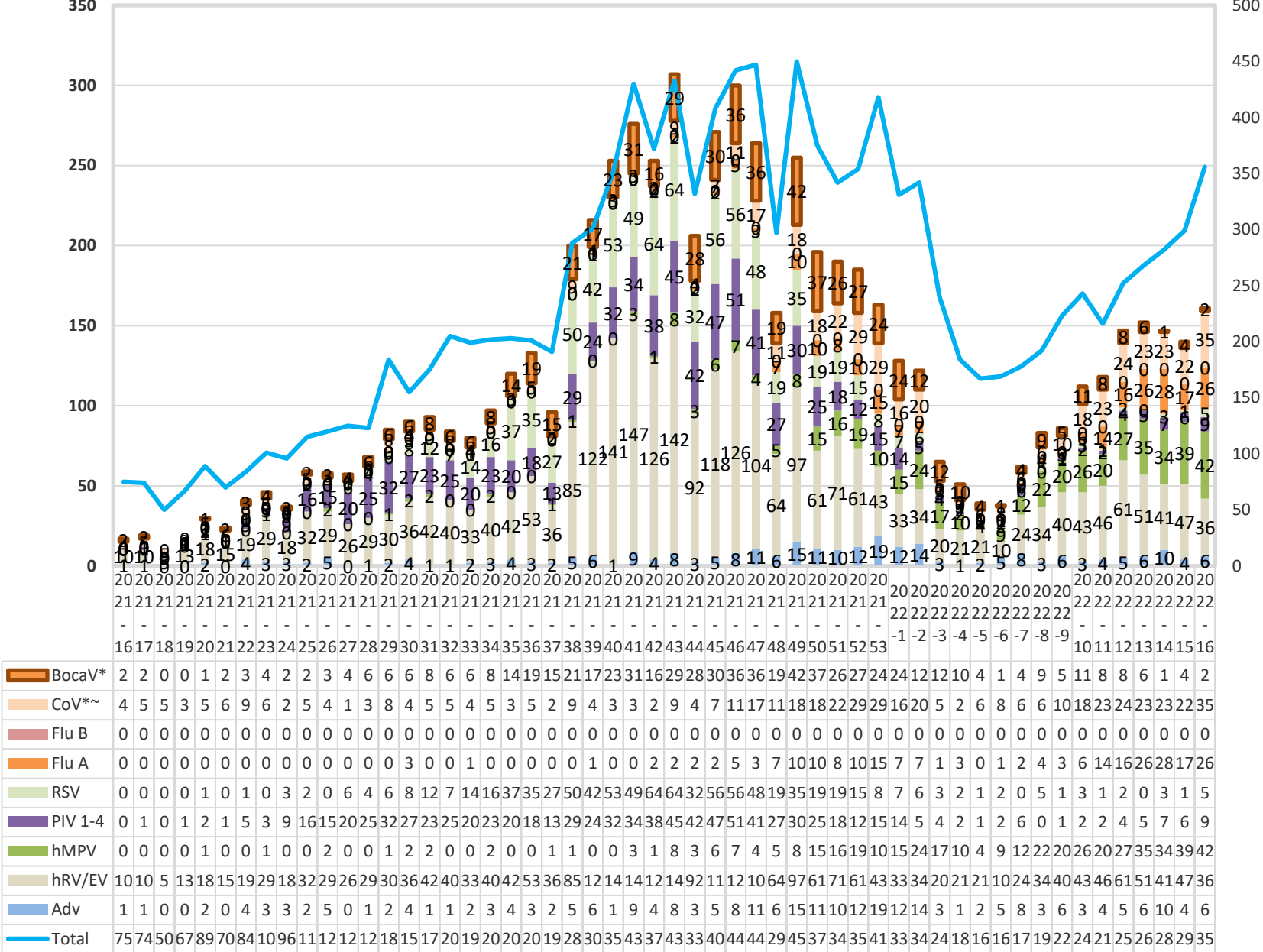


# Respiratory Virus Panel by PCR

**Beaumont**

Virus Detected (number)

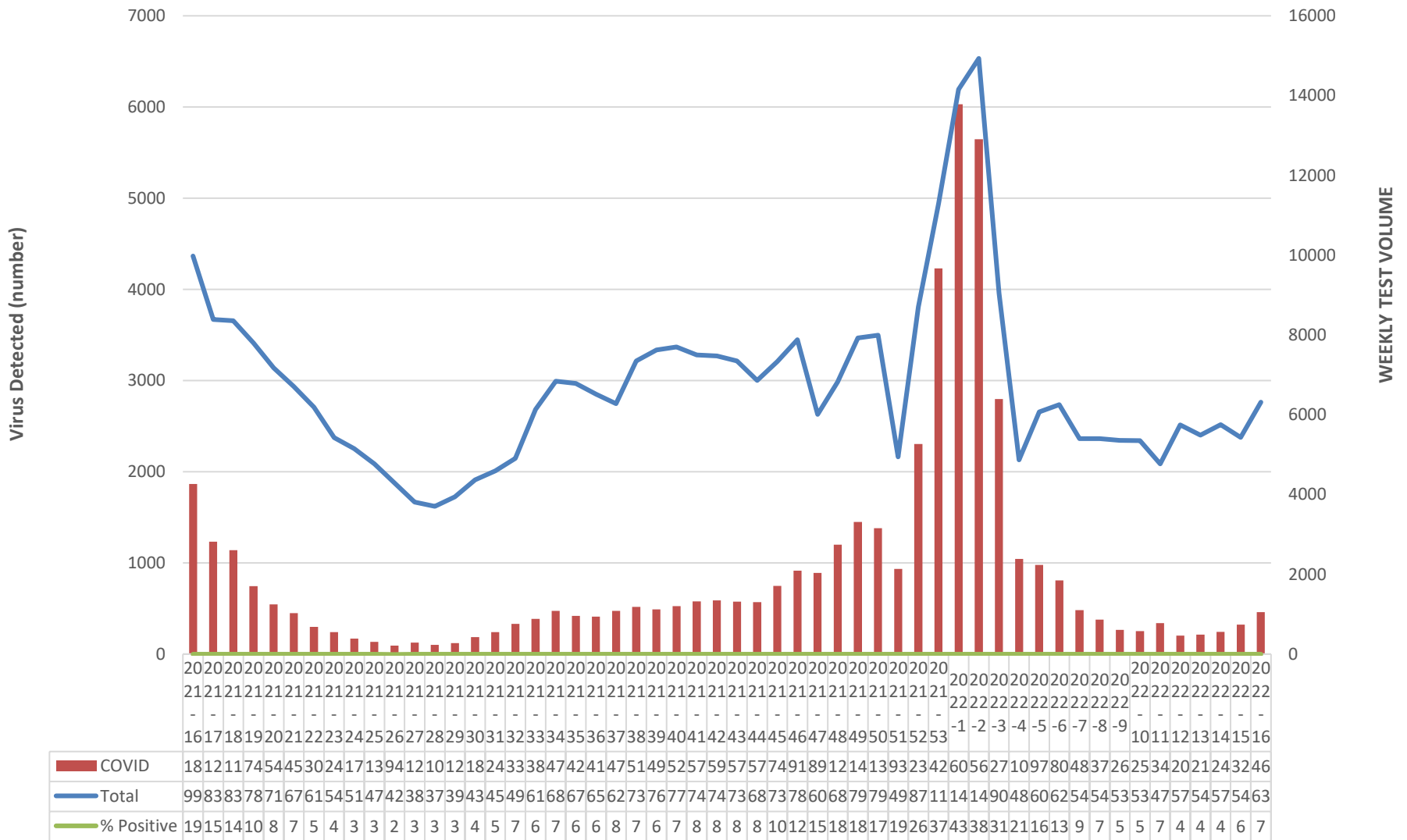
WEEKLY TEST VOLUME



\*~SARS-CoV-2 data from the RVP is reported on slide 7, CoV data reported above is only seasonal coronaviruses

# Beaumont Laboratory COVID-19 Testing

**Beaumont**

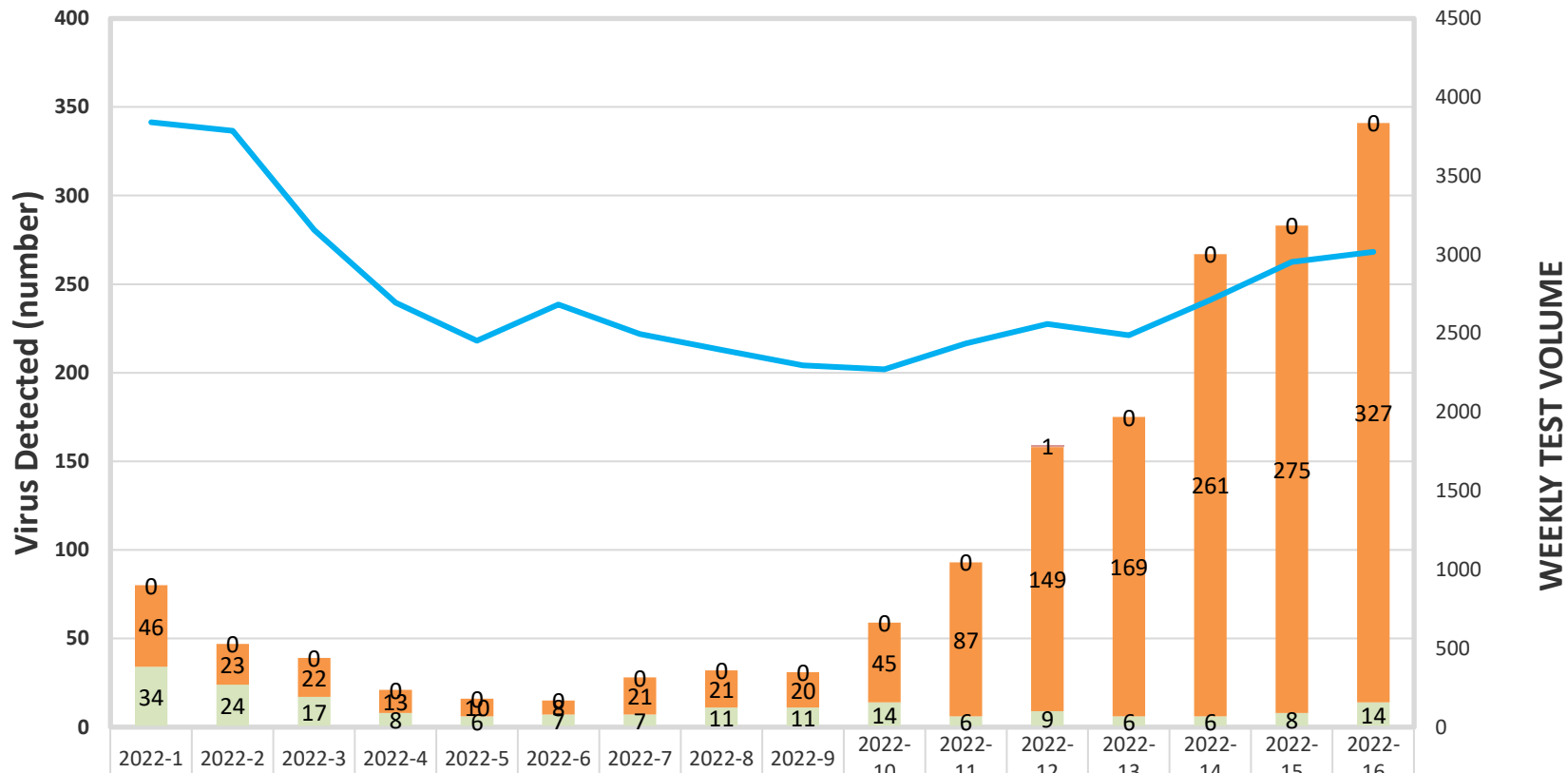


\*Beaumont Laboratory data includes retests that may represent persistent infections. For primary infections only, please refer to the MDHHS website [https://www.michigan.gov/coronavirus/0,9753,7-406-98163\\_98173---,00.html](https://www.michigan.gov/coronavirus/0,9753,7-406-98163_98173---,00.html)

# Beaumont Laboratory Influenza and RSV Testing

**Beaumont**





Flu B	0	0	0	0	0	0	0	0	0	0	0	1	0	0	0	0
Flu A	46	23	22	13	10	8	21	21	20	45	87	149	169	261	275	327
RSV	34	24	17	8	6	7	7	11	11	14	6	9	6	6	8	14
Total	3841	3786	3156	2695	2453	2684	2496	2396	2296	2272	2436	2559	2488	2713	2954	3018
% Positive	2.1%	1.2%	1.2%	0.8%	0.7%	0.6%	1.1%	1.3%	1.4%	2.6%	3.8%	6.2%	7.0%	9.8%	9.6%	11.3%